

CASA NELLA FORESTA OF WELLINGTON - P.U.D - REPLAT NO. 2.

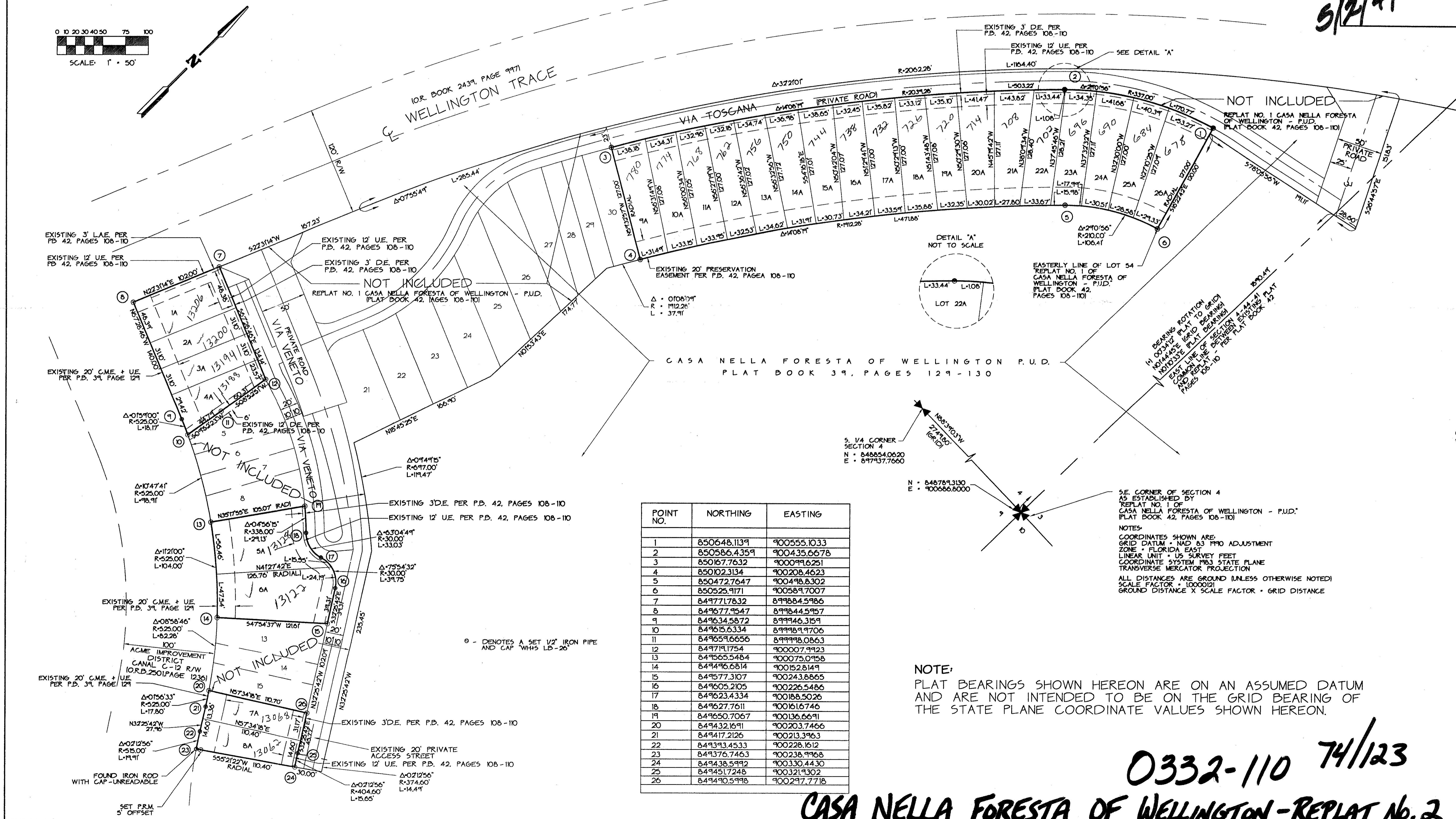
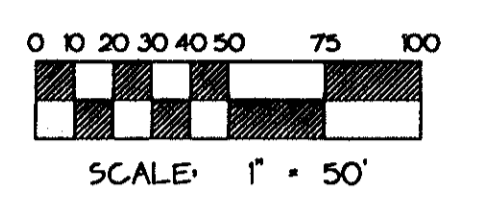
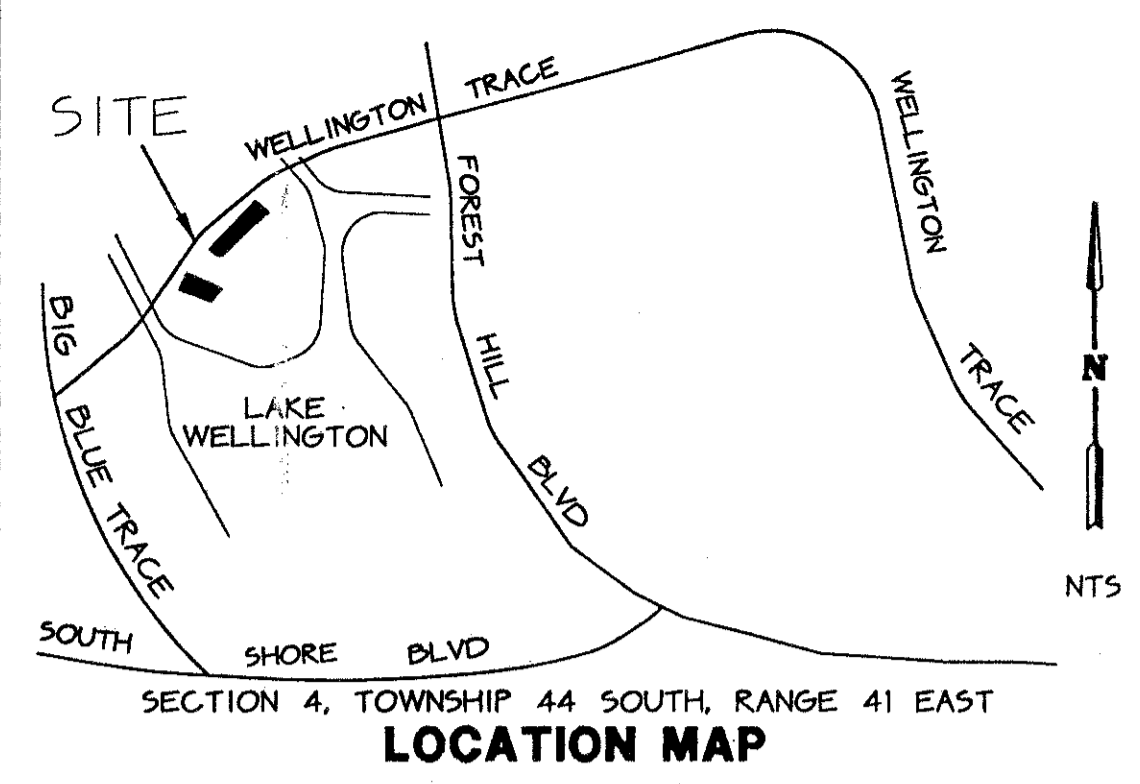
123

A REPLAT OF A PORTION OF REPLAT NO. 1 OF CASA NELLA FORESTA OF WELLINGTON - P. U. D.
AS RECORDED IN PLAT BOOK 42, PAGES 108 THROUGH 110 OF THE PUBLIC RECORDS OF PALM BEACH COUNTY, FLORIDA
LYING IN SECTION 4, TOWNSHIP 44 SOUTH, RANGE 41 EAST, PALM BEACH COUNTY, FLORIDA

THIS INSTRUMENT PREPARED BY JAMES E. PARK, P.L.S.
WILLIAMS, HATFIELD & STONER, INC. - ENGINEERS PLANNERS SURVEYORS
1901 SOUTH CONGRESS AVENUE, SUITE 150, BOYNTON BEACH, FLORIDA 33426

SHEET 2 OF 2

Pet. 86-32J
5/2/4/C



POINT NO.	NORTHING	EASTING
1	850648.1139	900555.1033
2	850586.4359	900435.6678
3	850167.7632	900099.6251
4	850102.3134	900208.4623
5	850472.7647	900498.8302
6	850525.9171	900589.7007
7	849771.7832	899884.5986
8	849677.9547	899844.5957
9	849634.5872	899946.3159
10	849615.6334	899989.9706
11	849659.6656	899998.0863
12	849719.1754	900007.9923
13	849565.5484	900075.0958
14	849496.6814	900152.8149
15	849577.3107	900243.8865
16	849605.2105	900226.5486
17	849623.4334	900188.5026
18	849627.7611	900161.6746
19	849650.7067	900136.6691
20	849432.1691	900203.7466
21	849417.2126	900213.3963
22	849393.4533	900228.1612
23	849376.7463	900238.9968
24	849438.5992	900330.4430
25	849451.7248	900321.9302
26	849490.5998	900297.7718

NOTE:
PLAT BEARINGS SHOWN HEREON ARE ON AN ASSUMED DATUM AND ARE NOT INTENDED TO BE ON THE GRID BEARING OF THE STATE PLANE COORDINATE VALUES SHOWN HEREON.

0332-110 74/123

CASA NELLA FORESTA OF WELLINGTON - REPLAT No. 2

SUBDIVISION - CASA NELLA FORESTA
BOOK 74 PAGE 123
FLOOD ZONE B
ZONING AR
QUAD # 77
ZIP CODE 33414
RE 86-32
BY JAMES WILLIAMS P.L.S.
4/24/14

TAZ 727